

AGRITURISMO FATTORIA DI SCALETTA

Via Asmara 37 – San Miniato (Pisa)



“LA VILLA”

VILLA WITH SWIMMING-POOL - SLEEPS 20

"La Villa" is a large detached house, over two floors, set within Fattoria di Scaletta surrounded by vineyards and fields of sunflower and wheat. The house has been furnished in a Tuscan country style and still has its original features with wooden beams on the ceilings and terracotta floors. There is also a large living-room with a big fireplace. It has direct access to a wide exclusive garden with gazebo, tables and chairs to relax in the open air and a private swimming-pool. It's the perfect place for large families or groups and it is ideally located to start exploring Tuscany and its nearby art cities Florence, Pisa and Lucca. Transport is also easy without cars, thanks to the small train station of San Miniato, only 1 km away.

LARGE DETACHED FARMHOUSE (about 400 sq. m.)

GROUND FLOOR: wide reception with fireplace, dining room, kitchen, larder, one bedroom (equipped for the handicapped) with its own en-suite bathroom
FIRST FLOOR: 10 bedrooms (two with ensuite bathrooms), 5 bathrooms (4 with a shower and 1 with a bathtub and a washing machine)

DISTANCES FROM ART CITIES: Florence 40 km., Pisa 45 Km., Lucca 50 Km., Siena 80 Km., Volterra 70 Km., San Gimignano 40 Km.

INTERIOR DETAILS:

BEDS: 20

BEDROOMS: 10 (3 with an en-suite bathroom, one of which equipped for the handicapped)

BATHROOMS: 6 (5 with a shower and one with a bathtub)

KITCHEN: large room with breakfast table (8 hobs, 2 electric ovens, 2 fridges with freezers, dishwasher)

DINING-ROOM: spacious room with a dining table and chairs for 22 people.

LIVING-ROOM: wide room with a working fireplace

WASHING MACHINE

SATELLITE TV

HEATING: methane gas

OUTDOOR AMENITIES:

PRIVATE SWIMMING-POOL: above ground (12 x 6 m., depth 1.40 m)

PRIVATE TABLE TENNIS

PRIVATE GARDEN: about 600 sq. m., gazebo equipped with outdoor furniture, table tennis, barbecue and an exclusive swimming-pool

PRIVATE PARKING: uncovered, in the garden

WI-FI: free Wi-Fi access in the reception area

EXTRAS ON REQUEST:

EXTRA ADULT BED OR COT: for an up-to-4-years old child

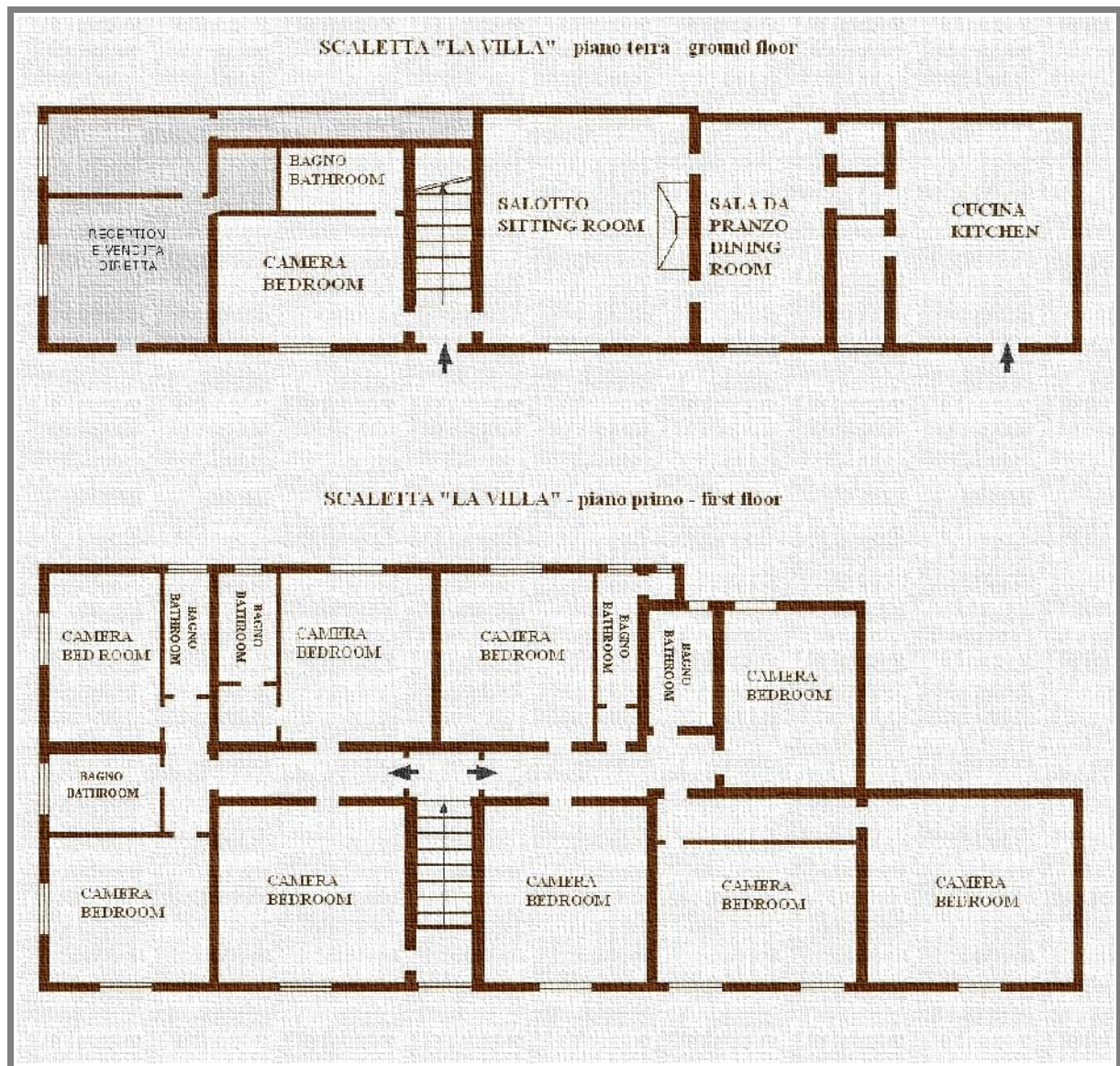
DIRECT SALE OF OUR FARM PRODUCTS: Chianti wine and extra-virgin olive oil

PETS: admitted on request only

NO PAYMENT BY CREDIT CARD



MAP "LA VILLA"



LOCATION



Via Asmara 37 - San Miniato (Pisa)

Directions:(GPS COORDINATES GPS: 43.707037 - 10.830100)

TAKE MOTORWAY 'A1', EXIT "FIRENZE-SCANDICCI", TAKE THE S.G.C. PISA-LIVORNO AND EXIT AT SAN MINIATO. AT THE STOP, TURN LEFT, THEN TAKE THE FIRST RIGHT. AFTER 50m TURN LEFT IN ASMARA. THE FARM ENTRANCE IS ON LEFT, NUMBER 37.