

## AGRITURISMO FATTORIA DI SCALETTA

Via Asmara 37 – San Miniato (Pisa)



### “IL GIRASOLE”

FARM HOUSE WITH PRIVATE SWIMMING-POOL - SLEEPS 10

“Il Girasole” is a large farm house on two floors, recently renovated, with original features such as terracotta floors and ceilings with wooden beams. It is furnished in a rustic Tuscan style. It is situated inside Fattoria di Scaletta, near San Miniato, a small town well known for the Frederick Tower and the white truffle, surrounded by a typical Tuscan countryside landscape with cypress trees, vineyards and sunflower fields. There is a wide private garden well equipped with barbecue, gazebo, exclusive swimming-pool, table and chairs to eat and relax in the open air.

It is the perfect place for large families or groups and it is ideally located to start exploring Tuscany and its nearby art cities Florence, Pisa and Lucca. Transport is also easy without cars, thanks to the small train station of San Miniato, only 1 km away.

**LARGE DETACHED FARMHOUSE** (about 260 sq. m.)

**GROUND FLOOR:** wide kitchen, dining room, laundry room with washing machine

**FIRST FLOOR:** 6 bedrooms, 3 bathrooms (two with a shower and one with a tub), large reception with fireplace, sitting-room with ornamental fireplace (not in use).

**DISTANCES FROM ART CITIES:** Florence 40 km., Pisa 45 Km., Lucca 50 Km., Siena 80 Km., Volterra 70 Km., San Gimignano 40 Km.

**INTERIOR DETAILS:**

**BEDS:** 10

**BEDROOMS:** 6 (1 with an ensuite bathroom)

**BATHROOMS:** 3 (two with a shower and one with a tub)

**KITCHEN:** with breakfast table, 8 hobs, 2 electric ovens, fridge and freezer. Direct access to the garden.

**RECEPTIONS:** one with a working fireplace, one with an ornamental fireplace, both on the first floor.

**FURNISHING:** in a typical Tuscan rustic style

**WASHING MACHINE**

**SATELLITE TV**

**HEATING:** methane gas

**OUTDOOR AMENITIES:**

**PRIVATE SWIMMING-POOL:** above ground (4.00 x 7.80 m., depth 0.90 m)

**PRIVATE GARDEN:** wide about 400 sq. m., gazebo equipped with outdoor furniture, table tennis, barbecue and an exclusive swimming-pool

**PRIVATE PARKING:** uncovered, in the garden

**PRIVATE TABLE TENNIS**

**WI-FI:** free Wi-Fi access in the reception area

**EXTRAS ON REQUEST:**

**EXTRA ADULT BED OR COT:** for an up-to-4-years old child

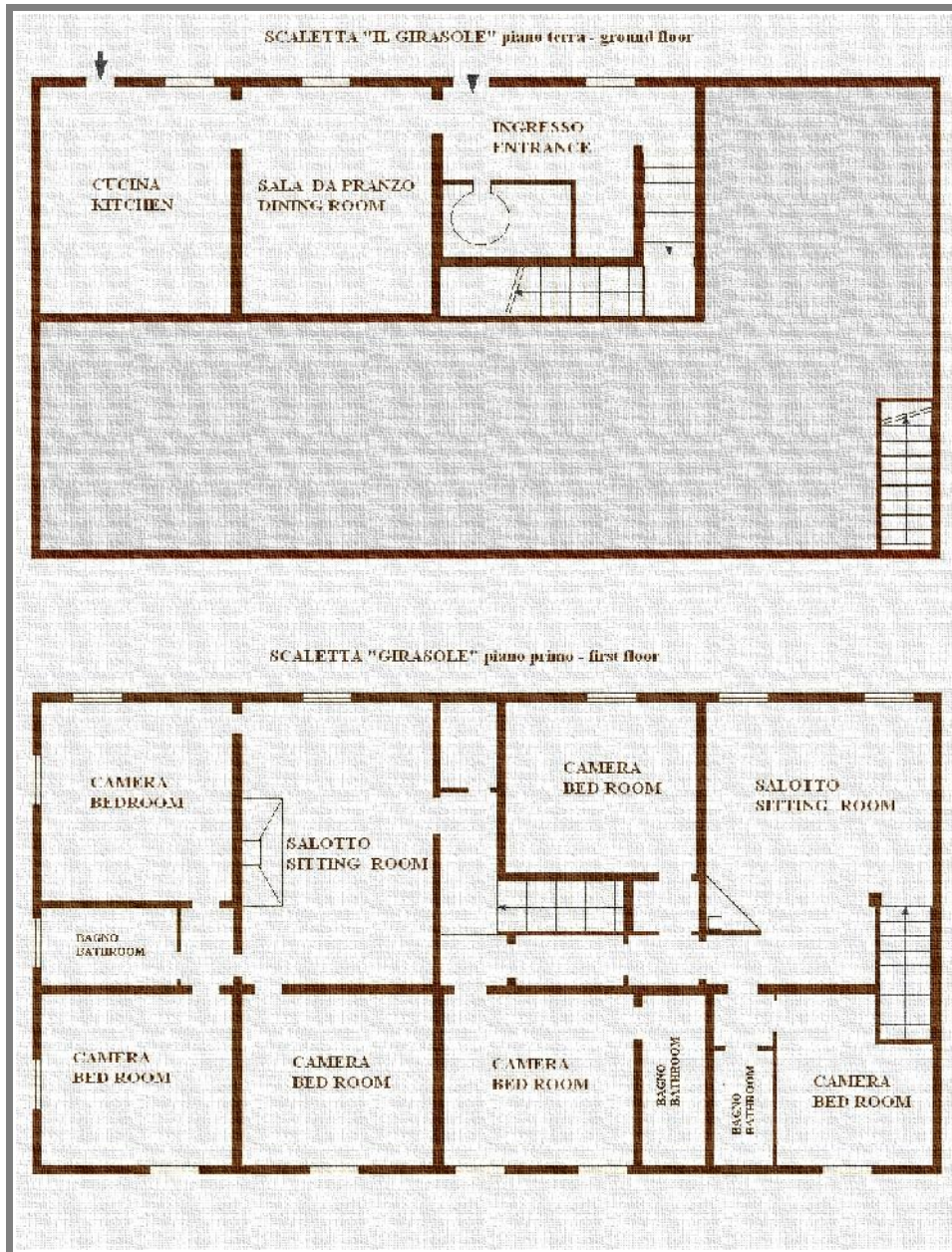
**DIRECT SALE OF OUR FARM PRODUCTS:** Chianti wine and extra-virgin olive oil

**PETS:** admitted on request only

**NO PAYMENT BY CREDIT CARDS**



## MAP "IL GIRASOLE"



## LOCATION



Via Asmara 37 - San Miniato (Pisa)

**Directions:**(GPS COORDINATES GPS: 43.707037 - 10.830100)

TAKE MOTORWAY 'A1', EXIT "FIRENZE-SCANDICCI" ,TAKE THE S.G.C. PISA-LIVORNO AND EXIT AT SAN MINIATO. AT THE STOP, TURN LEFT, THEN TAKE THE FIRST RIGHT. AFTER 50m TURN LEFT IN ASMARA. THE FARM ENTRANCE IS ON LEFT, NUMBER 37.